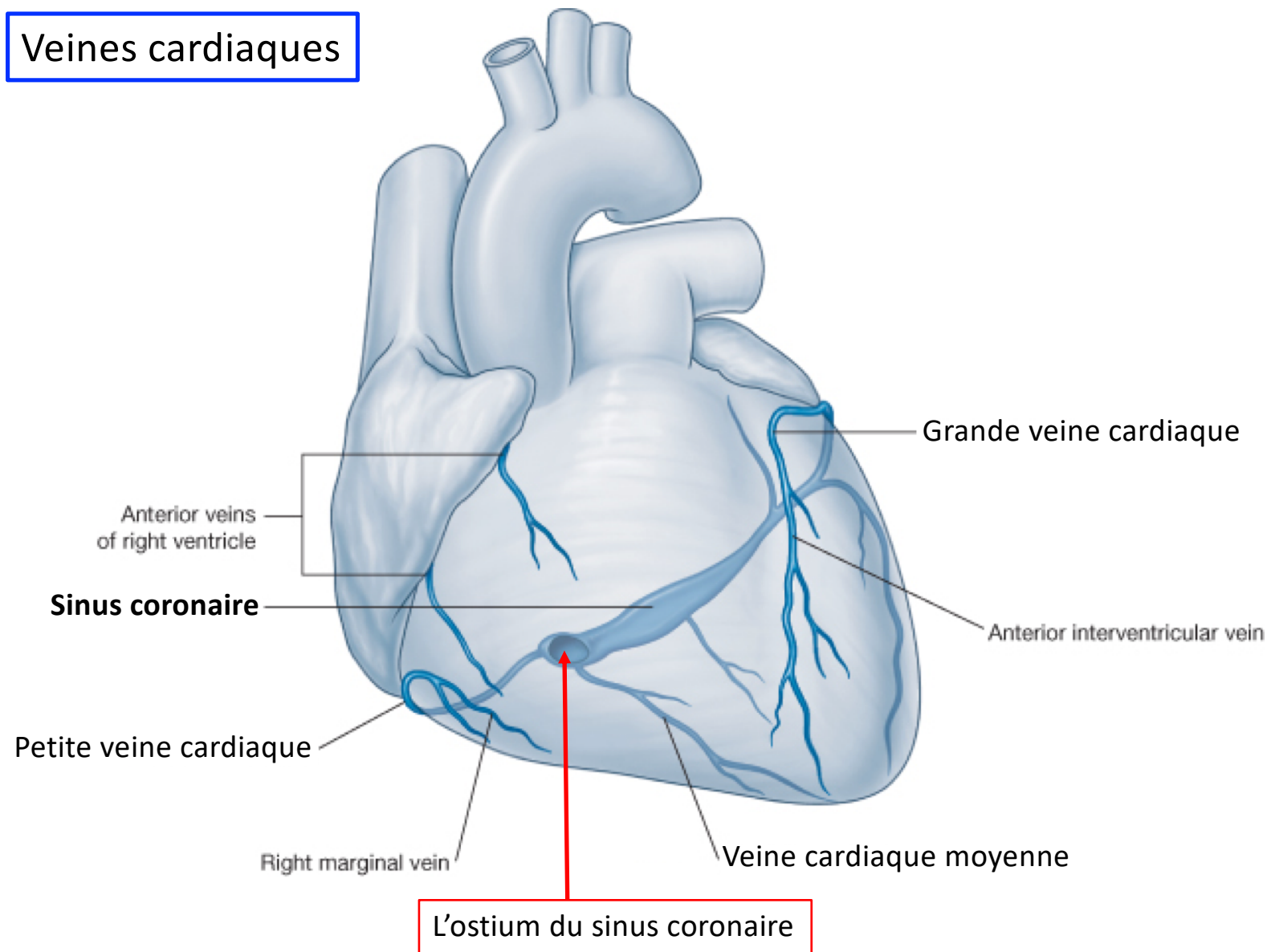
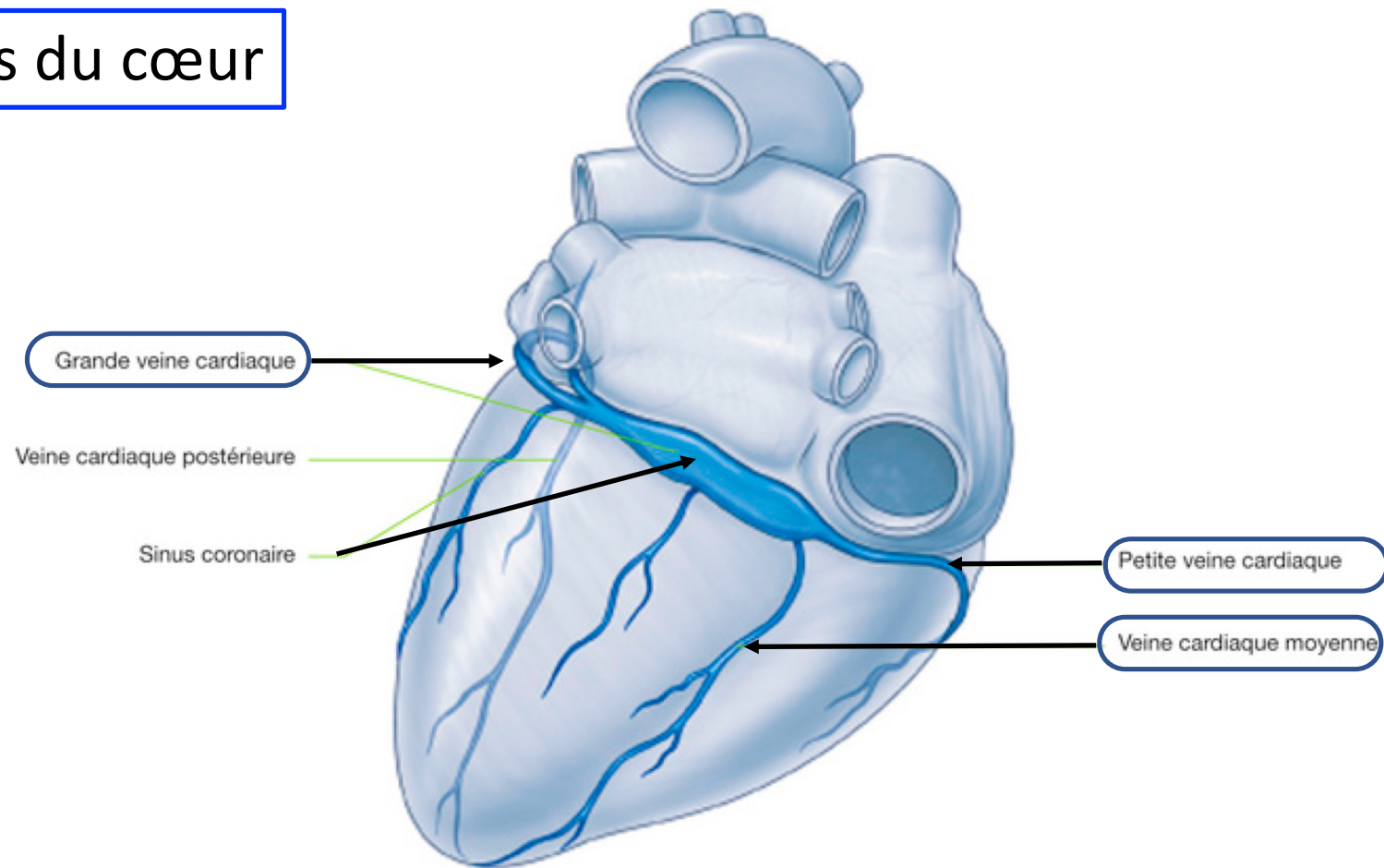


## Veines cardiaques



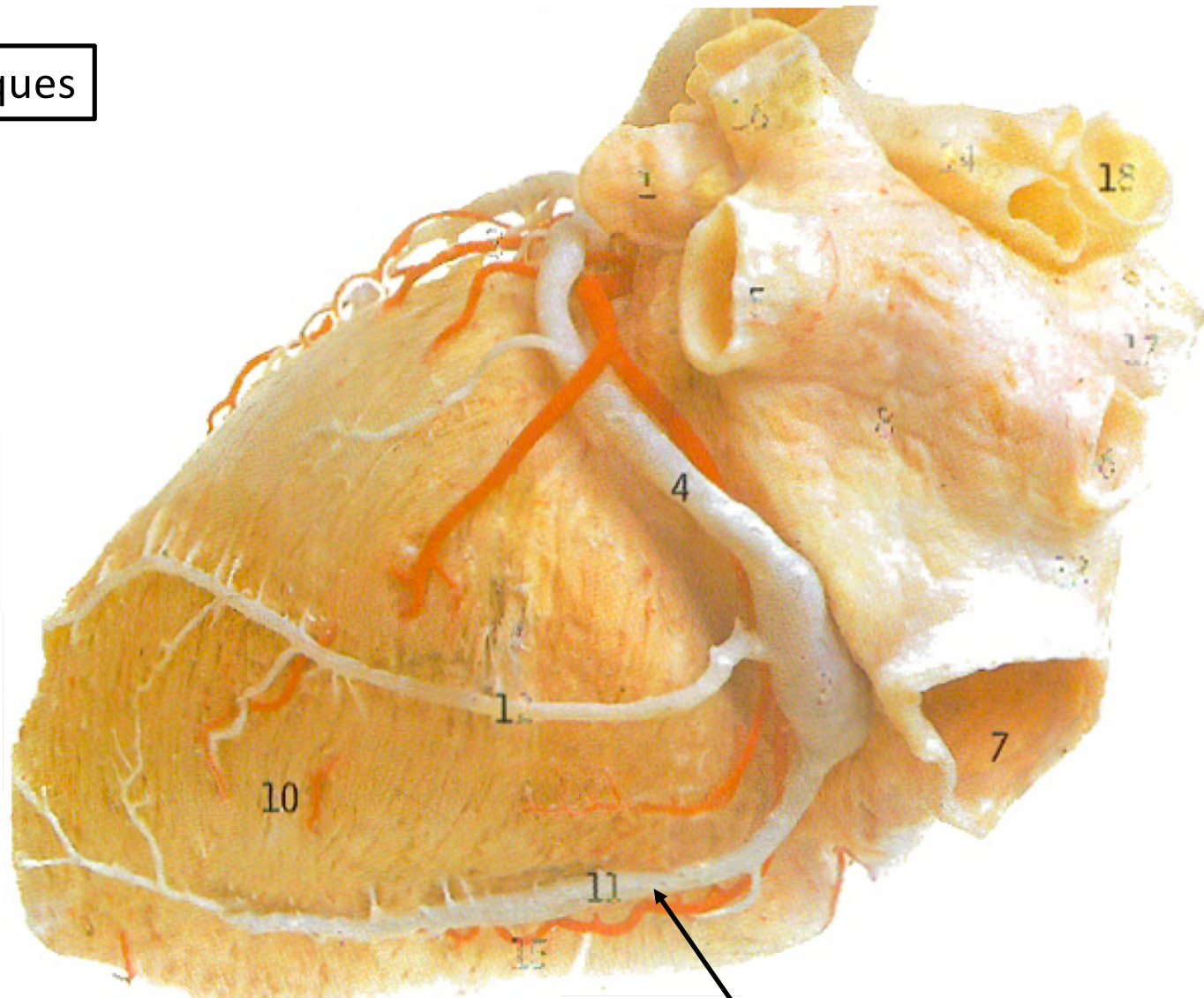
## Veines du cœur



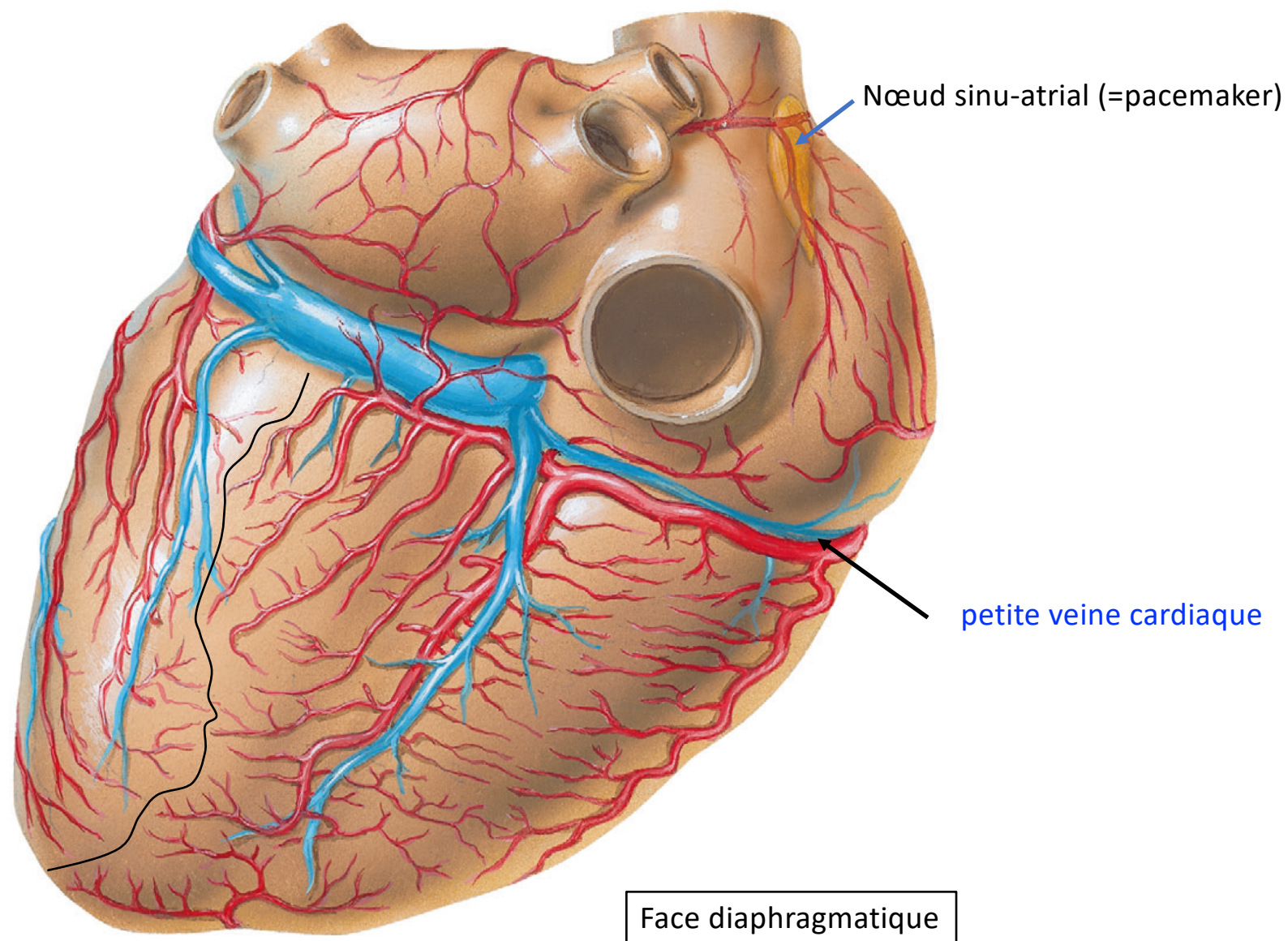


# Veines cardiaques

dissection



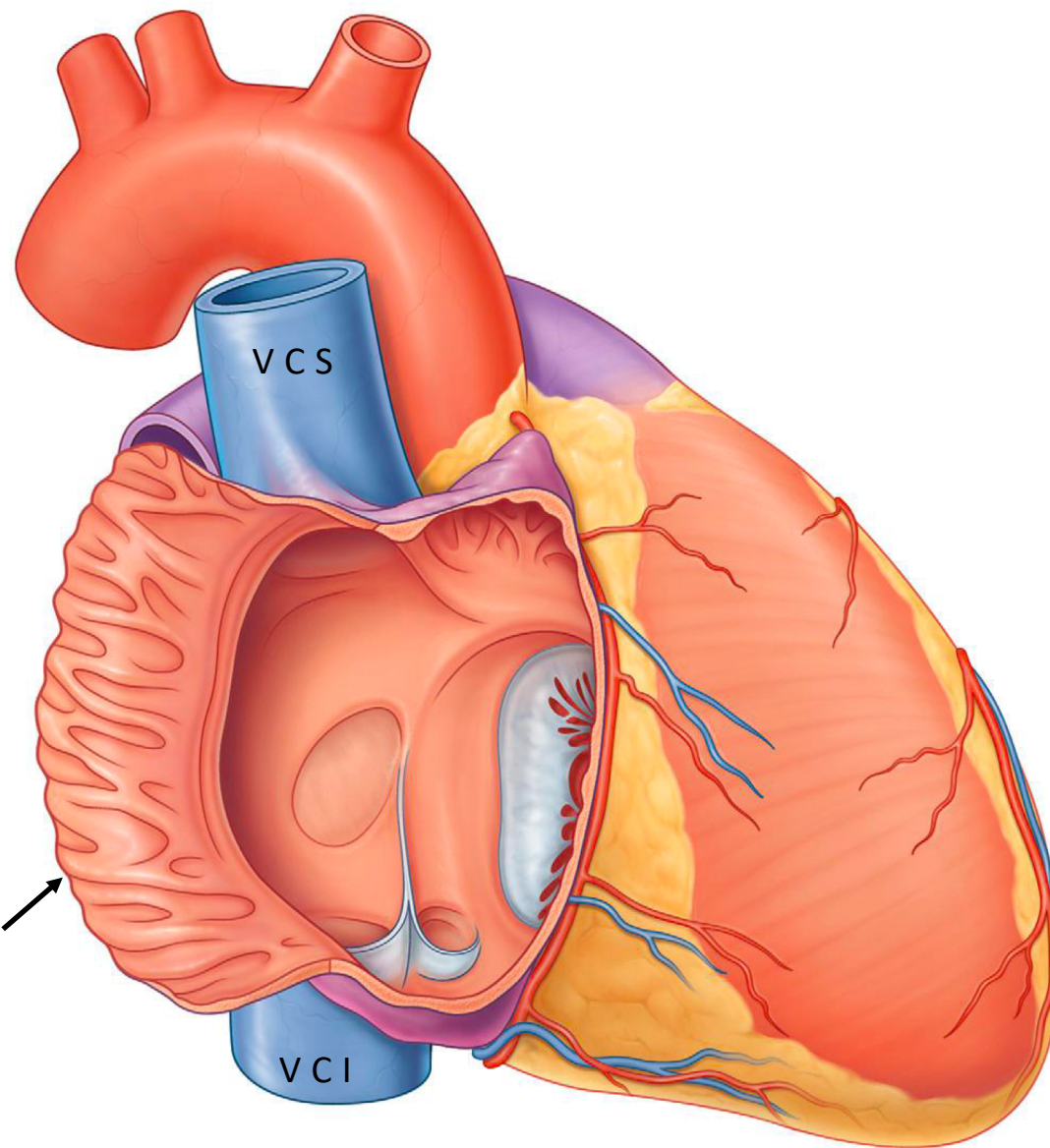
veine moyenne du cœur

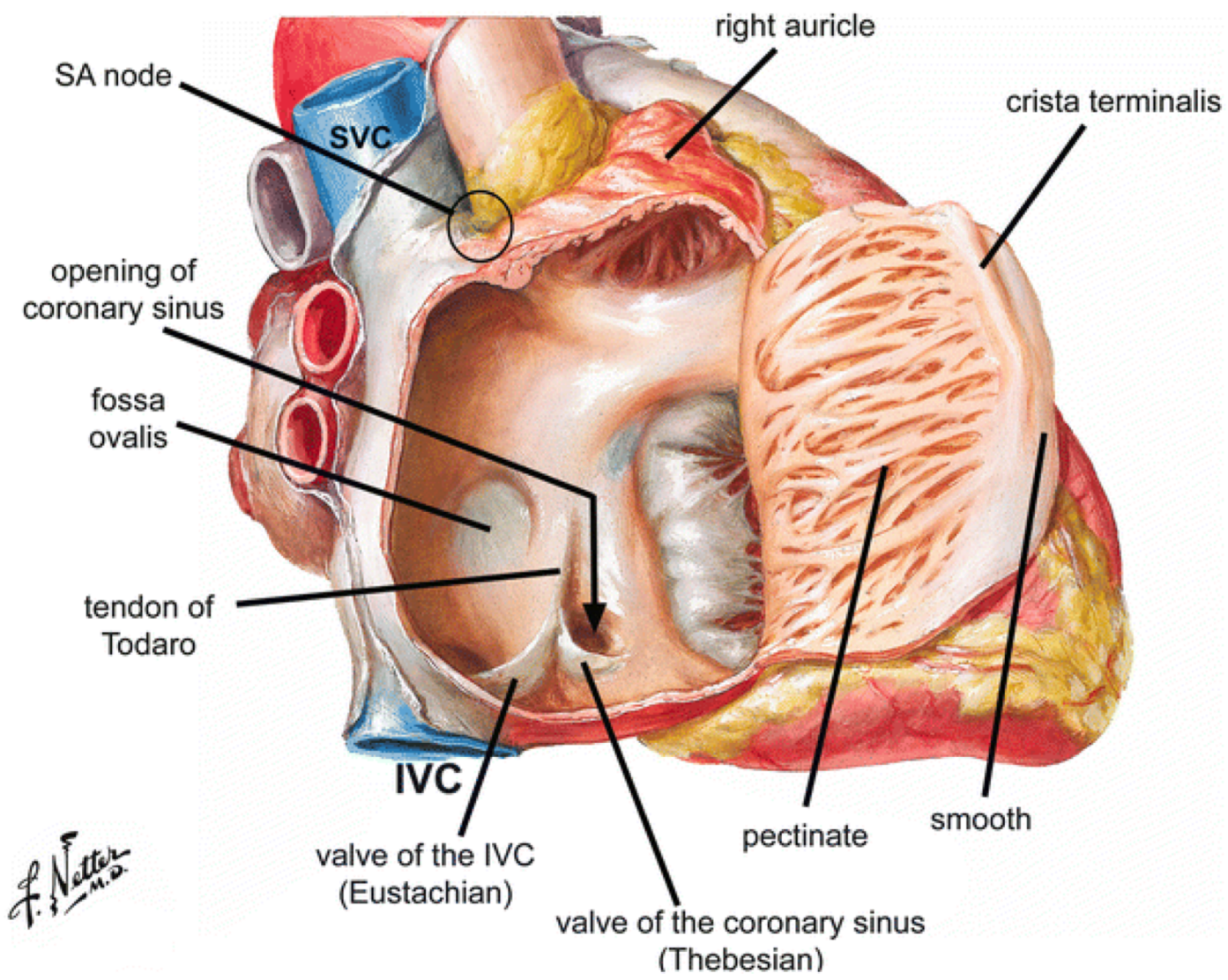




Atrium droit

Muscles pectinés

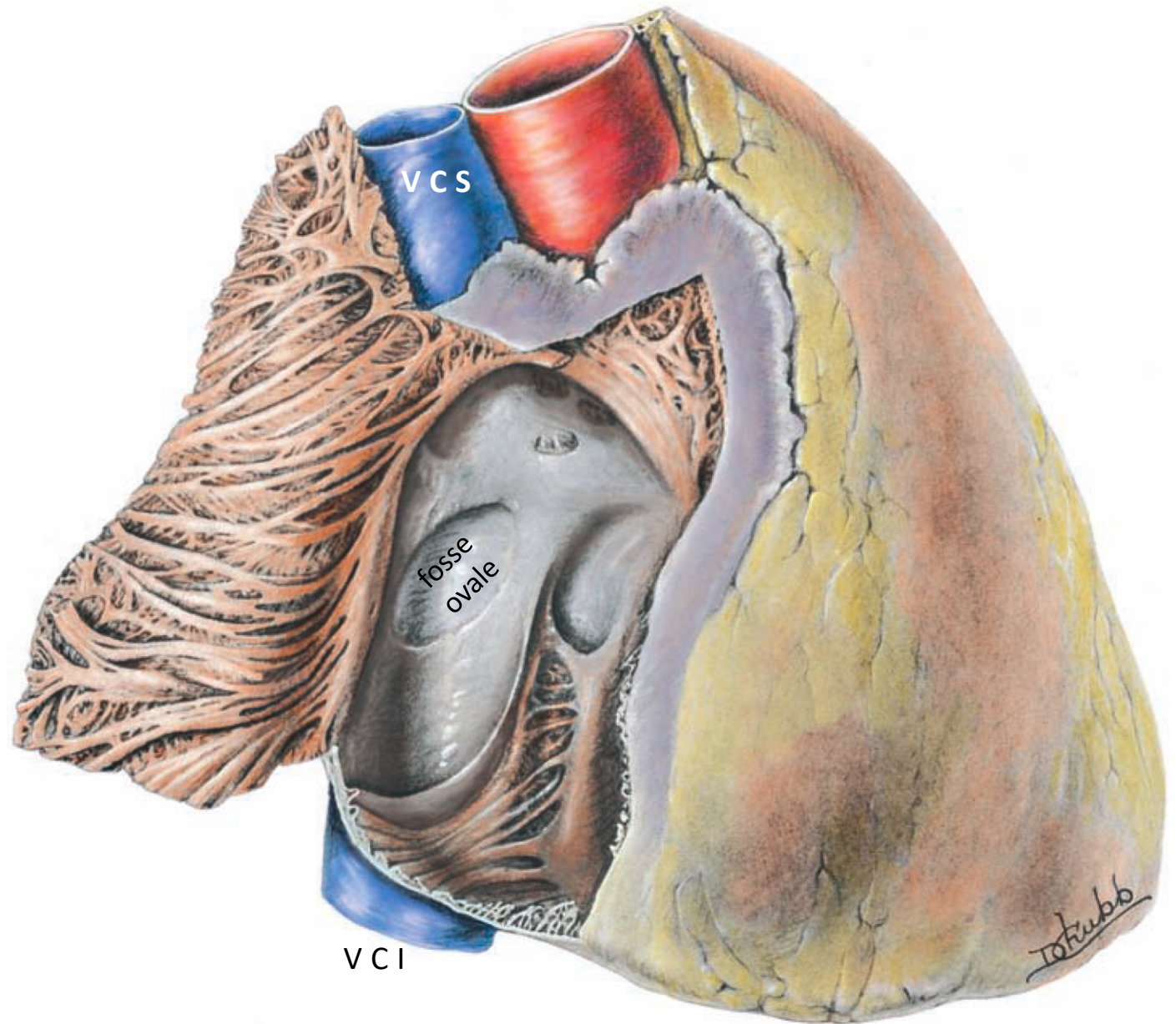






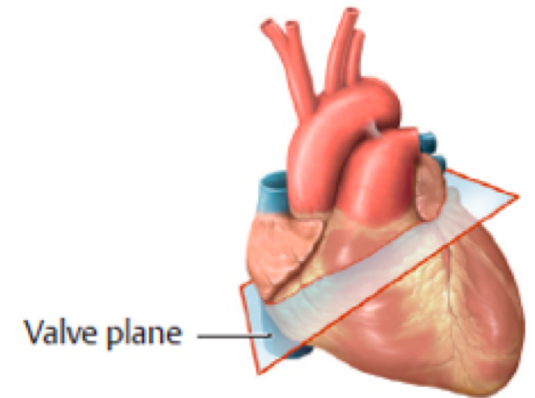
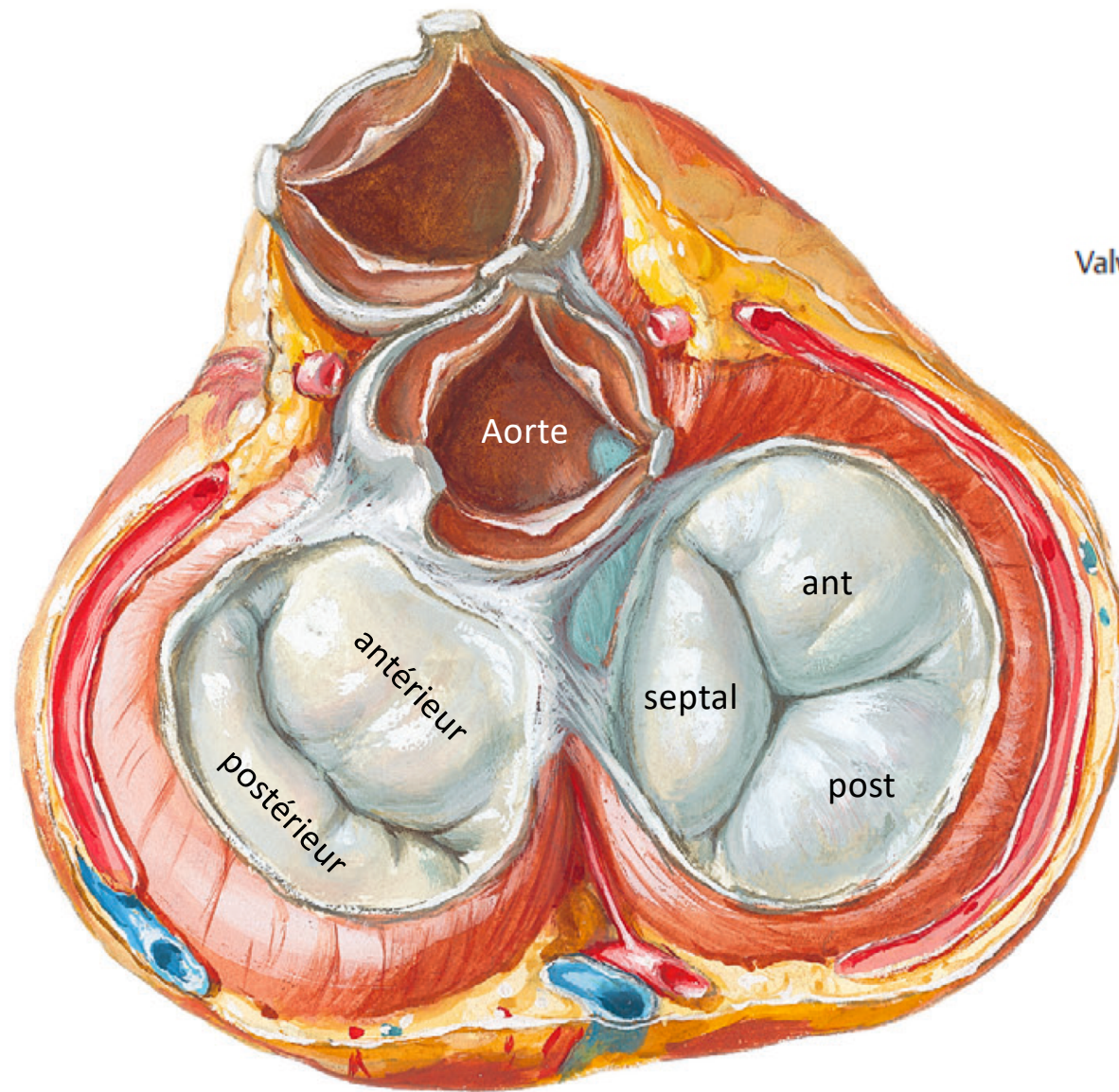
## Atrium droit

- partie lisse  
sinus venarum
- partie rugueuse  
muscles pectinés



# Cœur

**Valve mitrale :**  
valvule antérieure  
valvule postérieure



**Valve tricuspide :**  
valvule antérieure  
valvule postérieure  
valvule septale



# Cœur

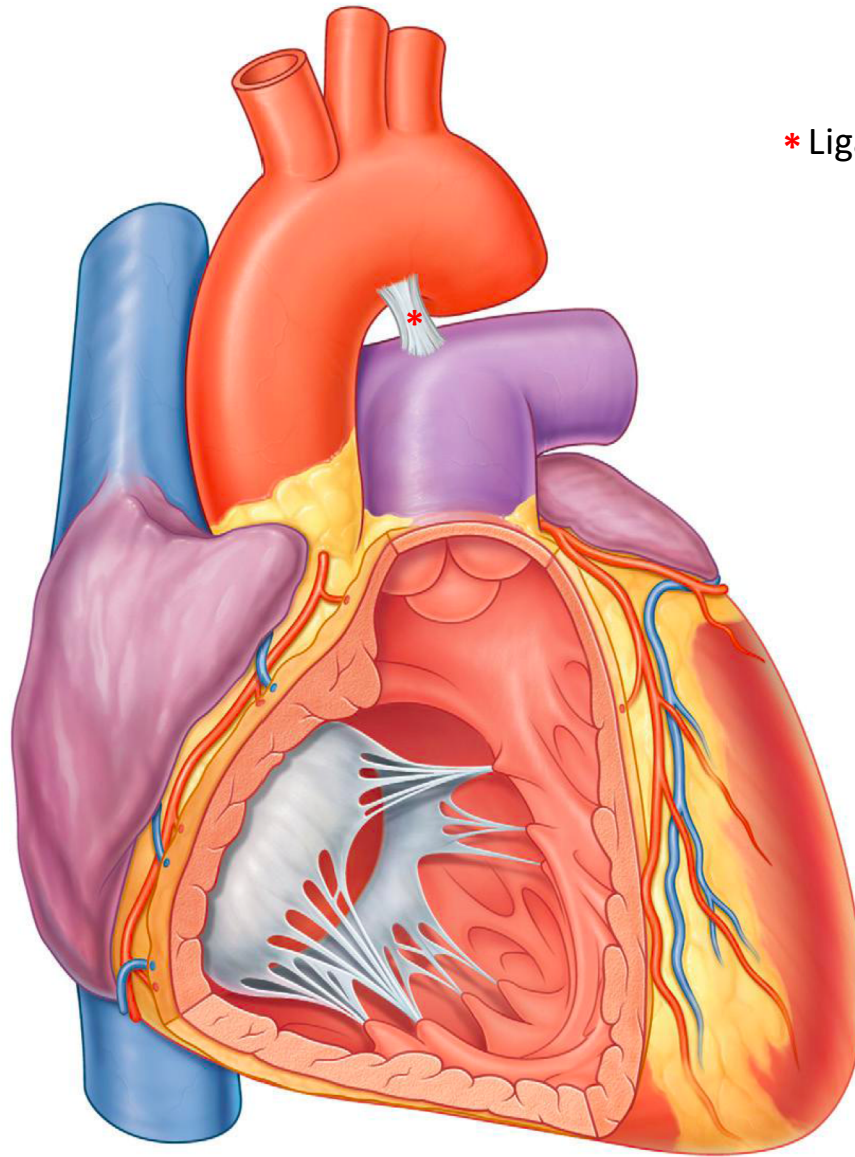
Ventricule droit

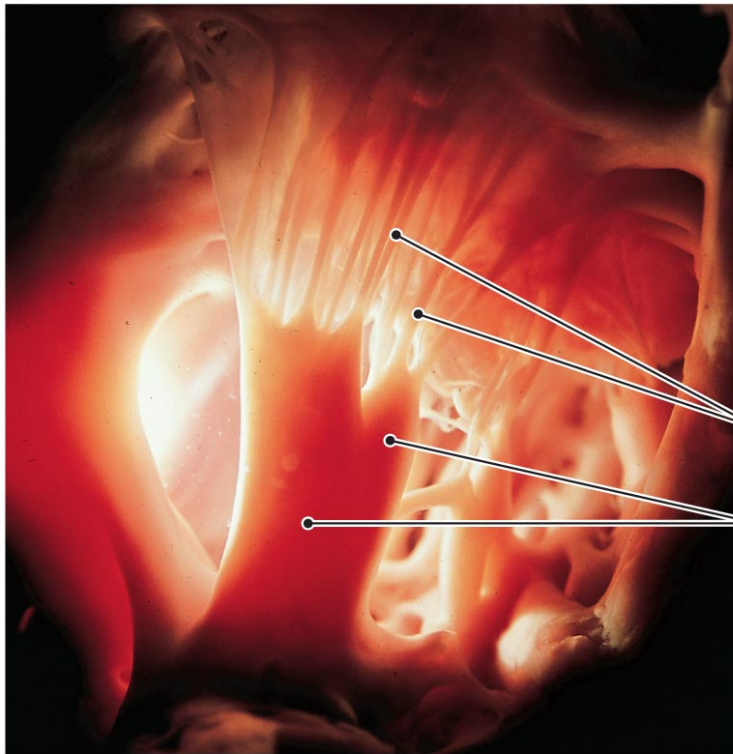
Muscles papillaires :

3 groupes

- antérieur
- postérieur
- septal

\* Ligament artériel





Cordes tendineuses

Muscle papillaire

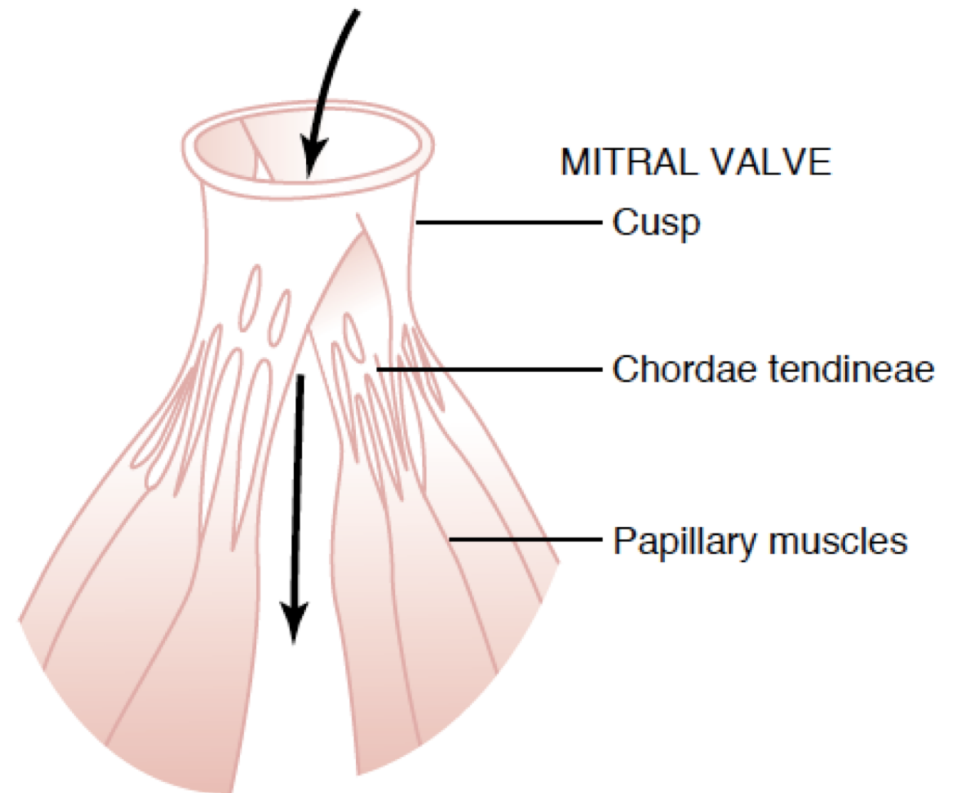
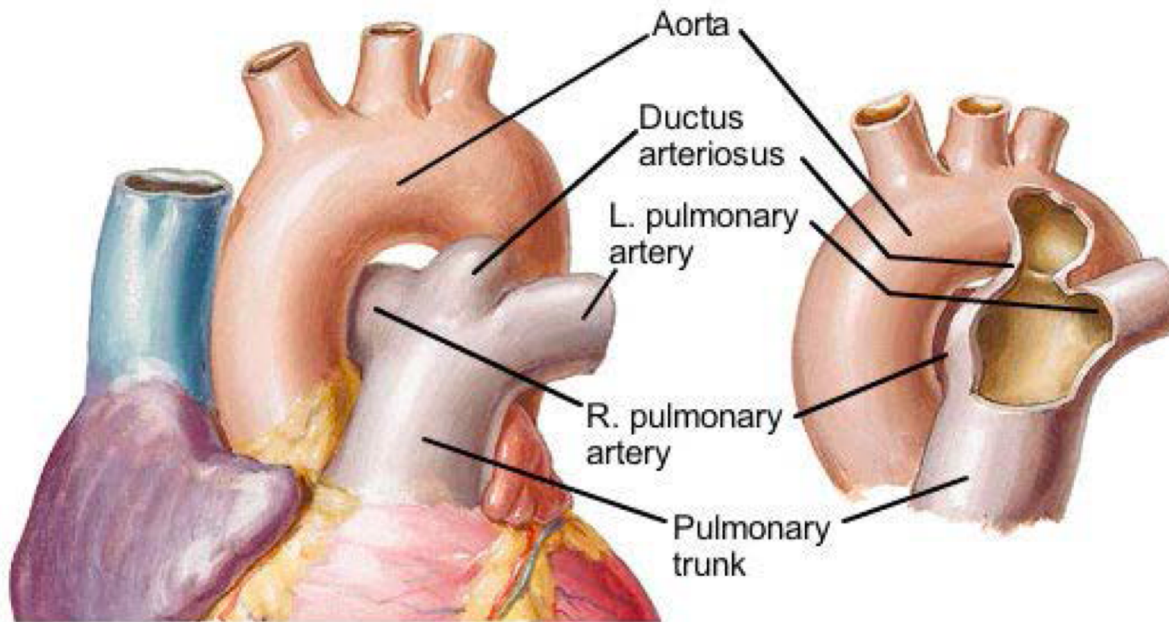


Schéma du Guyton

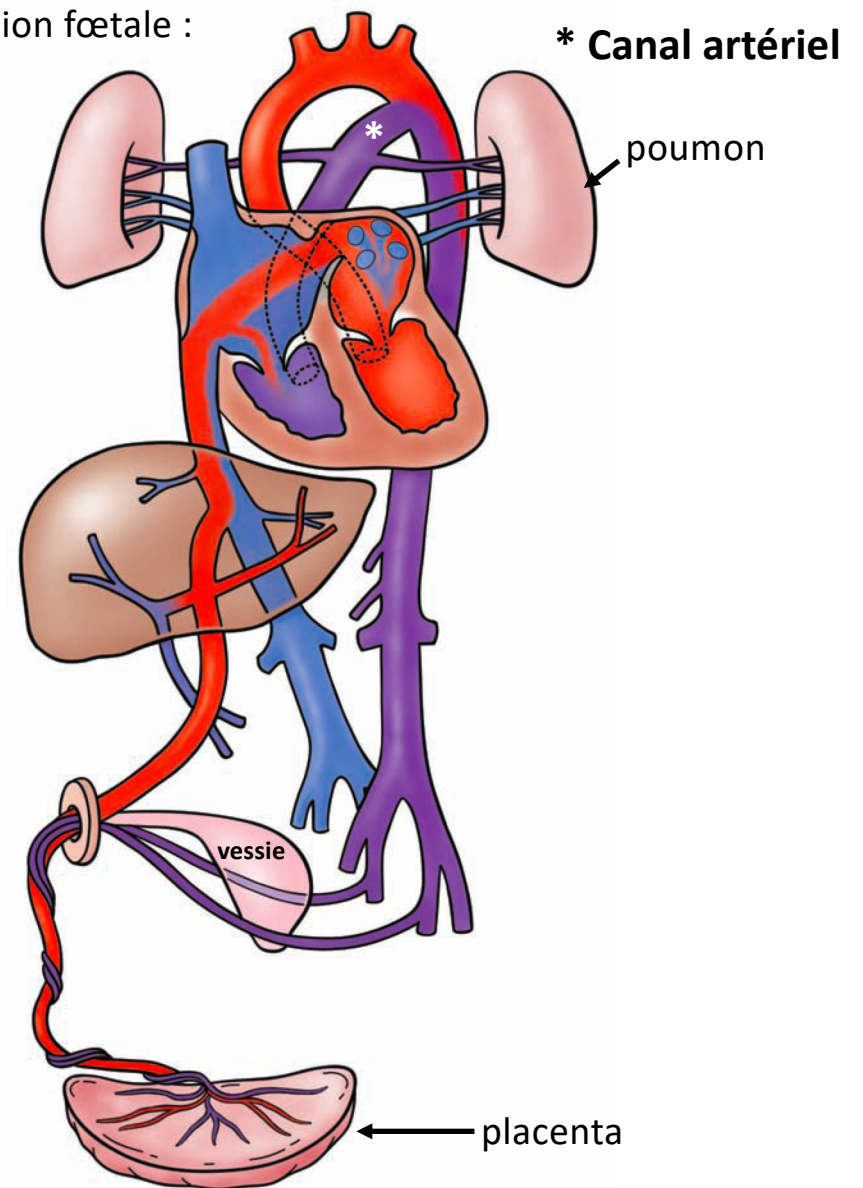
# Le canal artériel

(Ductus arteriosus)

## Patent ductus arteriosus



Circulation foetale :



## Shunts in the fetal circulation system

1. Ductus venosus (of Arantius)	between umbilical vein and inferior vena cava	bypass of liver circulation
2. Foramen ovale	between right and left atrium	bypass of pulmonary circulation
3. Ductus arteriosus (Botalli)	between pulmonary trunk and aorta	

